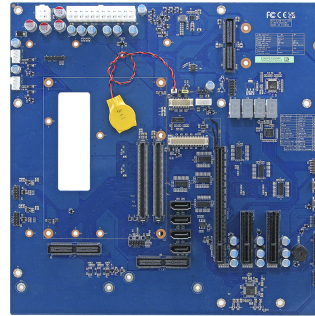


# EEV-EX26

## Micro ATX Type6 COM Express Carrier Board



### Product Features

- Micro ATX Carrier Board Supports COM Express Type 6 PICMG@COM Express® Revision 3.1
- 3 x DP/HDMI 1 x VGA 1 x 2.5G LAN 4 x USB3.2 Gen2 x1 1 x SD/DIO 1 x SPI ROM 2 x USB4 Type C on different module boards via. IET connector at IO
- Audio Interface: Line-out. Mic-in
- 1 x PCIe x16 (Gen4) 2 x PCIe x4 (Gen4)
- COMe Carrier Board Size: 9.6" x 9.6" (243.84mm x 243.84mm)
- ATX Power

### Specification

System Information	
Processor	Micro ATX Carrier Board Supports COM Express Type 6 PICMG@COM Express® Revision 3.1
Expansion	
Expansion	1 x PCIe x16 (Gen4) 2 x PCIe x4 (Gen4)
Display	
Spec. & Resolution	1 x DP 1 x HDMI 1 x IET connector to 2 x USB Type C module board at IO 1 x VGA
Multiple Display	Depends on the COMe module
LVDS	1 x LVDS 1 x eDP
Audio	
Audio Codec	Realtek ALC888S HD Audio Decoding Controller
Audio Interface	Line-out. Mic-in
Ethernet	
Ethernet Interface	1 x 2.5 Gigabit Ethernet Connector
Software Support	
OS	According to COMe Module Solution
Certification	
Certification Information	CE, FCC, RoHS Compliant

## I/O

<b>USB</b>	4 x USB 3.2 Gen2 x1 1 x USB 2.0
<b>GPIO</b>	1 x 16-bit GPIO
<b>MIO</b>	1 x LPC 1 x SPI 1 x SD socket 1 x IET connector for LPC

## Mechanical & Environmental

<b>Operating Temp.</b>	-40 ~ 85°C (-40 ~ 185°F)
<b>Storage Temp.</b>	-40 ~ 75°C (-40 ~ 167°F)
<b>Operating Humidity</b>	40°C @ 95% Relative Humidity, Non-condensing
<b>Weight</b>	0.91lbs (0.412kg)
<b>Power Requirement</b>	+12V/+5V/5VSB/+3.3V/-12V
<b>Dimension (L x W)</b>	9.6" x 9.6" (243.84mm x 243.84mm)

## Ordering Information

<b>Ordering Information</b>	EEV-EX26-A1R Type 6 Micro ATX Ev. Board for COM Express Rev.3.0 A1
-----------------------------	---